

LK-M03/M06L/M12L

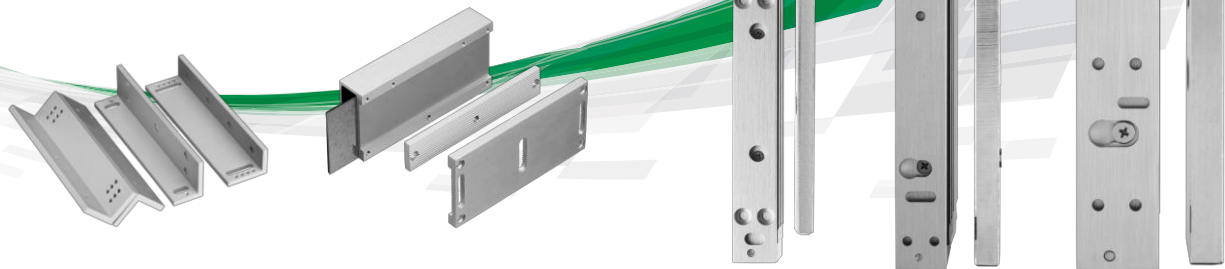
Maglocks 300/600/1200 LBS

Brackets:

LA-L03/06/12

LA-Z03/06/12

LA-U03/12



Rosslare's LK-M03/M06L/M12L high quality magnetic locks are ideal for secure applications where access is restricted, such as office buildings, hospitals, and airports. They have a holding force of 300/600/1200 pounds, respectively, and are easy to install. The attractively designed Maglocks are surface mounted, operate on dual voltage, 12 VDC or 24 VDC, and have low current consumption. These Maglocks are compatible with EN and UL standards.

GENERAL DESCRIPTION

The LK-M03/M06L/M12L are a series of surface mounted magnetic locks with anodized aluminum housing with 300/600/1200 lbs of holding force, respectively.

LK-M03/M06L/M12L operates on dual voltage (12 VDC or 24 VDC) and low current consumption. In addition, they have built-in voltage spike suppressor and no residual magnetism.

Different types and sizes of brackets and housings are available to fit various mounting conditions.

MAIN FEATURES

- Dual voltage (12 VDC or 24 VDC) by changing a jumper setting
- Built-in voltage spike suppressor
- Compatible with EN55011:1998 class B, EN60601-1-2:2002, EN61000-4-1:1995,

EN61000-4-3:2002 & UL-S5351

COMPATIBLE BRACKETS

There are 3 series of brackets, consisting of a total of 8 brackets, which are used in conjunction with Rosslare's 3 magnetic locks, as follows:

LK-M03 – LA-L/U/Z03

LK-M06L – LA-L/Z06 and LA-U12

LK-M12L – LA-L/U/Z12

All brackets are made of aluminum and have an anodized finish.

The two U brackets are suitable for glass doors with a thickness of up to 12 mm (0.47 in.).

The L & Z brackets are applicable for inswing door.

Spacers can be placed between the surface and the magnetic lock to improve functionality and security.

SPECIFICATIONS

ELECTRICAL SPECIFICATIONS	LK-M03	LK-M06L	LK-M12L
■ Voltage	Dual Voltage 12/24 VDC		
■ Current	12 VDC: 360 mA 24 VDC: 180 mA	12 VDC: 500 mA 24 VDC: 250 mA	12 VDC: 500 mA 24 VDC: 250 mA
MAGLOCK ENVIRONMENTAL SPECIFICATIONS			
■ Operating Environment	Suitable for indoor use		
MAGLOCK PHYSICAL SPECIFICATIONS			
■ Holding Force	136 kg (300 lb)	272 kg (600 lb)	544 kg (1200 lb)
■ Dimensions (L x W x D)	Main: 166 x 38.6 x 21.5 mm (6.54 x 1.52 x 0.85 in.) Contact: 129 x 31.5 x 7.5 mm (5.08 x 1.24 x 0.03 in.)	Main: 250 x 47.2 x 26.6 mm (9.84 x 1.86 x 1.05 in.) Contact: 185 x 37.5 x 11.5 mm (7.28 x 1.47 x 0.45 in.)	Main: 266 x 73 x 40 mm (10.5 x 2.87 x 1.57 in.) Contact: 184 x 60 x 16 mm (7.24 x 2.36 x 0.63 in.)
■ Weight	Main: 0.63 kg (1.39 lb) Contact: 0.25 kg (0.55 lb)	Main: 1.22 kg (2.7 lb) Contact: 0.66 kg (1.45 lb)	Main: 3.09 kg (6.8 lb) Contact: 1.39 kg (3.06 lb)
BRACKETS PHYSICAL SPECIFICATIONS			
	LA-L03	LA-L06	LA-L12
■ Dimensions (L x W x D)	166 x 30 x 42 mm (6.54 x 1.18 x 1.65 in.)	250 x 30 x 48 mm (9.8 x 1.18 x 1.89 in.)	266 x 38 x 76 mm (10.5 x 1.5 x 2.99 in.)
■ Weight	145 g (0.32 lb)	233 g (0.51 lb)	474 g (1.05 lb)
	LA-Z03	LA-Z06	LA-Z12
■ Dimensions (L x W x D)	166 x 38 x 38 mm (6.54 x 1.50 x 1.50 in.)	185 x 50 x 50 mm (7.3 x 1.97 x 1.97 in.)	185 x 63.8 x 63.8 mm (7.3 x 2.5 x 2.5 in.)
■ Weight	376 g (0.83 lb)	457g (1 lb)	746 g (1.64 lb)
	LA-U03	LA-U12	
■ Dimensions (L x W x D)	130 x 62 x 33.6 mm (5.12 x 2.44 x 1.32 in.)	185 x 62 x 33.6 mm (7.28 x 2.44 x 1.32 in.)	
■ Weight	378 g (0.83 lb)	550 g (1.21 lb)	
■ Spacer Thickness	Not Available	5 mm	6 mm
SYSTEM COMPONENTS	Rosslare's Access Control product line		
PRODUCT WARRANTY	One-Year Limited Product Warranty		

ABOUT ROSSLARE SECURITY

Rosslare Security Products, a division of Rosslare Enterprises Ltd., has been manufacturing high-quality security

products since 1980. The company's three main lines – Access Control, Intrusion Detection and Guard Patrol – together with a growing product range have transformed Rosslare Security into a major worldwide force in security. Rosslare holds itself to the highest standards of customer service and manufacturing (ISO 9001:2008, ISO 14001:2004, ISO 13485:2003). The company complies with the EU Directive 2002/95/EC on Restriction of Hazardous Substances (RoHS).

Visit our website: www.rosslaresecurity.com

5505-0237101-00
Copyright © Rosslare
2013



5505-0237101-00
Copyright © Rosslare 2013