

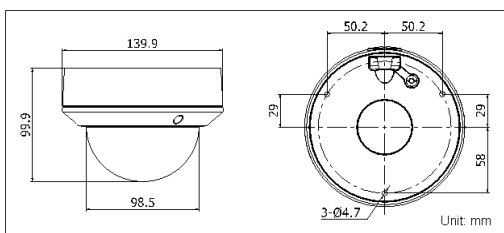
## DS-2CD2732F-I(S) 3.0MP VF IR Dome Network Camera



### Key features

- 3 megapixel (2048 x 1536) high resolution
- Full HD1080p real-time video
- IR LEDs: up to 20m
- DWDR & 3D DNR & BLC
- Support on-board storage (up to 64GB)
- (-S) Audio I/O, Alarm I/O
- IP66
- Vandal-proof

### Dimensions



DS-2CD2732F-I (S)	
<b>Camera</b>	
Image sensor	1/3" progressive scan CMOS
Min. illumination	0.07 lux@F1.2, AGC on 0.1 lux@F1.4, AGC on 0 lux with IR
Shutter time	1/25s (1/30s) ~ 1/100,000s
Lens	2.8 ~ 12mm @ F1.4, Angle of view: 98° ~ 30.5°
Angle adjustment	Pan: 0° ~ 355°, tilt: 0° ~ 75°, rotation: 0° ~ 355°
Lens mount	Φ14
Day & night	ICR
Digital noise reduction	3D DNR
Wide dynamic range	Digital WDR
Backlight compensation	Yes, zone configurable
<b>Compression standard</b>	
Video compression	H.264 / MJPEG
H.264 compression profile	Main profile
Bit rate	32 Kbps ~ 16 Mbps
Audio compression (-S)	G.711 / G.726
Audio bit rate (-S)	64Kbps (G.711) / 16Kbps (G.726)
<b>Image</b>	
Max. image resolution	2048 x 1536
Frame rate	50Hz: 12.5fps (2048 x 1536), 25fps (1920 x 1080), 25fps (1280 x 720) 60Hz: 15fps (2048 x 1536), 30fps (1920 x 1080), 30fps (1280 x 720)
Image settings	Saturation, brightness, contrast adjustable through client software or web browser
<b>Network</b>	
Network storage	NAS
Alarm trigger	Motion detection, tampering alarm, network disconnect, IP address conflict, storage exception, storage error
Protocols	TCP/IP, ICMP, HTTP, HTTPS, FTP, DHCP, DNS, DDNS, RTP, RTSP, RTCP, PPPoE, NTP, UPnP, SMTP, SNMP, IGMP, 802.1X, QoS, IPv6, Bonjour (SIP optional)
System compatibility	ONVIF, PSIA, CGI
General functionalities	Dual stream, user authentication, watermark
<b>Interface</b>	
Communication interface	1 RJ45 10M / 100M Ethernet port
On-board storage	Built-in Micro SD/SDHC/SDXC card slot, up to 64 GB
<b>General</b>	
Operating conditions	-30 °C ~ 60 °C (-22 °F ~ 140 °F), humidity 95% or less (non-condensing)
Power supply	DC12V ± 10%, PoE (802.3af)
Power consumption	Max. 5.5W
Impact protection	IEC60068-2-75Eh, 50J; EN50102, up to IK10
Ingress protection level	IP66
IR range	Up to 20m
Dimensions	Φ 140 x 99.9 mm (Φ 5.51" x 3.94")
Weight	1000g

### Available models

DS-2CD2732F-I, DS-2CD2732F-IS

\* -S: 1-ch audio I/O interface and 1-ch alarm I/O interface.

\* Product picture and technical specs subject to change without previous notice. For further information, please contact our local sales representatives.

### Accessories



**DS-1238ZJ**  
Pendant Mount  
Aluminium Bracket



**DS-1256ZJ**  
Wall Mount  
Aluminium Bracket  
with gang box